



BRACED FOR THE ELEMENTS

ECOPLY®
STRUCTURAL

Square
EDGE

ECOPLY®
STRUCTURAL

FLOORING

ECOPLY®
STRUCTURAL

ROOFING

ECOPLY®
STRUCTURAL

BARRIER





BARRIER

PROJECT SPECIFICATIONS

PRODUCTS:

Ecoply® Barrier
Ecoply Barrier Sealing Tape

BUILDER:

G.J. Gardner Homes Taranaki

A new family home, situated by the ocean, in the extra high wind zone of the Taranaki region required an upgrade from a standard rigid air barrier board to an Ecoply Barrier System. The additional bracing has given the homeowner added peace of mind and provided the builders with an earlier than anticipated close in.

ECOPLY®
STRUCTURAL

BARRIER

CarterHoltHarvey
Woodproducts New Zealand

For on-site technical and product support freecall 0800 746 399 or visit www.chhwoodproducts.co.nz

0800 326 759
www.chhwoodproducts.co.nz

BRACED FOR THE ELEMENTS

Situated on the western side of the North Island, the Taranaki region is surrounded by ocean and is exposed to all weather systems moving from the west, including strong damaging winds and even tornadoes, G.J. Gardner has built over 170 homes in Taranaki since 2006 and for them, quality and safety come first.

In the past GJ Gardner engineers have specified fibre cement rigid air barrier systems, however, to gain additional bracing and support for a new cliff top property in Taranaki they switched to the Ecoply® Barrier rigid air barrier system.

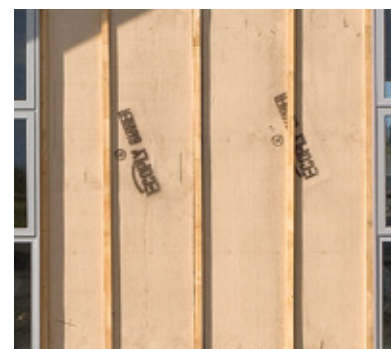
Construction for the 391 m² family home began in February 2013 and has a scheduled completion date of December 2013. The plans show the house has been tailored to the family's style of living, with spectacular panoramic views of the ocean. Rod Roebuck, Construction Manager for G.J. Gardner Taranaki says: "We haven't used Ecoply Barrier before, but given the location of this build and the high winds in this area, our engineer opted for the increased protection against leaks into the building envelope and the additional bracing Ecoply Barrier offers".

"G.J. Gardner Taranaki will definitely be using Ecoply® Barrier for future projects. It is quicker to install compared to compressed sheet products, it's easy to handle and offers additional bracing".

Rod Roebuck
Construction Manager

Rod Roebuck and his building team have been delighted by the added benefits of using Ecoply Barrier. Roebuck commented: "Early close in is a huge plus for us, the

faster we can get closed in the better. It means things like GIB® plasterboard can get fixed earlier as you don't have to wait for the building to be clad before carrying on. On 200 m² brick home for example, I estimate that we could potentially start gibbing about 8 to 10 days earlier using this rigid air barrier system.



"Another bonus is that the product is far more user-friendly. Our builders love the fact that it isn't hard on tools, is less fragile and compared to 6 mm fibre cement board, the weight factor is reduced with Ecoply Barrier requiring only one man to lift".

"G.J. Gardner Taranaki will definitely be using Ecoply Barrier for future projects. It is quicker to install compared to compressed sheet products, it's easy to handle and offers additional bracing".

